

## **Wilderness Traverse Adventure Race – September 2016**

### **Competitor Instructions**

#### **Emergency Phone Numbers:**

Head of Safety: Graham Rupert (416-560-8757)

Event Director: Bob Miller (416-735-4021)

Assistant Event Director: Brad Jennings (519-719-5265)

Headquarters: Barb Campbell (416-524-9565)

Emergency Services: 911

#### **Contents of Race Package:**

- These Competitor Instructions (3 pages)
- 5 National Topographic System (NTS) Topographic Maps
- 1 Backroad Mapbook overview map

#### **Details for National Topographic System Maps**

- Information Current as of 1994 (some trails and roads (in bold) as of 2016)
- Scale: 1:50000
- 1000m UTM Grid Zone 17T NAD 83
- Contour Interval: 50ft or 20m
- Grid Declination: 11.5° West (current as of 2016)

#### **Definitions:**

CP – Checkpoint (Must punch SI card at all CPs)

TA – Transition Area (All TAs are also CPs. Teams will have access to specified gear bins)

#### **Course Specific Rules:**

1. Any team that will arrive at a CP past an "**Absolute Cut-Off**" must notify Race Management of their location and condition prior to that cut-off.
2. All teams must be off the course by 2:30pm on Sunday September 25, 2016.
3. **Hwy 400 and Hwy 69 are OUT OF BOUNDS (unless specified on map).** Teams caught traveling on these roads will be disqualified. It is okay to cross Hwy 400 on over/under passes.
4. Crossing Private Property is forbidden unless otherwise stated. Be courteous and respectful when passing or approaching any private residences (especially in the dark).
5. Traveling along railway tracks is forbidden (it is okay to cross them).

**Pre-Race DeLorme Tracker Meeting** - 8:15am on Saturday September 24, 2016 at the boat launch onto Wah Wash Kesh Lake. One person from each team must be present and have the DeLorme Tracker with them. At this point we'll turn the trackers on and place them in tracking mode at the same time.

### **START                      Map 1**

The Start is located on the water at the south end of Bennetts Bay on Wah Wash Kesh Lake. The race begins at 8:30am on Saturday September 24, 2016.

### **Section 1 – Canoeing**

#### **CP1                      Map 2**

CP1 is located at a campsite on the south shore of the Magnetawan River below Thirty Dollar Rapids.

## ***Wilderness Traverse Adventure Race – September 2016***

**Special Instructions for Section 1** – Teams are required to portage around all rapids indicated with red X's on the map. Any teams caught, or reported to have run any rapids marked with X's on the map will be disqualified from the event. If teams wish, they are permitted to leave canoe's and paddling gear stowed unattended on shore in order to reach CP1, however all canoes and paddling gear must be delivered to CP2/TA2. Teams must always have full-time mandatory gear with them.

**CP2/TA1                      Map 2                      (Gear Bin #1 available)**

CP2/TA1 is located at Harris Lake Marina. Upon arrival at the TA follow instructions of TA Staff and portage canoes 100m to the indicated drop-off location.

### **Section 2 – Mountain Biking**

**CP3                                      Map 2**

CP3 is located on a trail north of Teal Trail Road.

**CP4/TA2                      Map 2                      (Gear Bin #2 available)**

CP4/TA2 is located at the Pointe au Baril Community Centre.

**Section 3 – Trekking/Coasteering** (acceptable means of travel: on foot & packraft)

Note: If teams wish to start bushwhacking immediately after departing CP4/TA2 they can access the forest by trekking slightly east of the TA and proceeding south behind the Beacon Marine Blue Boat Storage buildings.

**CP5                                      Map 3**

CP5 is located at a campsite in a clearing 100m north of the north shore of the Shawanaga River.

**CP6 (unmanned)                      Map 3**

CP6 is located at a 4-way intersection.

**CP7                                      Map 3**

CP7 is located at a campsite on the shore of Shawanaga Inlet off Georgain Bay at the end of Green Point.

**CP8                                      Map 3**

CP8 is located at a campsite on the southwest shore of Imrie Lake.

**CP9/TA3                      Map 3                      (Gear Bin #2 available)**

CP9/TA3 is located in a rocky clearing on Jolliffe Lane.

## ***Wilderness Traverse Adventure Race – September 2016***

**Short-Course Cut-Off at CP9/TA3:** Teams must leave CP9/TA3 by 0830 on Sunday September 25, 2016 to remain on the Full Course. Teams departing after 0830 can continue on the Short Course and bike directly to the Finish skipping CP10, CP11, CP12 and CP13. Teams on the Short Course must also follow the highlighted route indicated on Map 5 when biking through the town of Parry Sound.

**Absolute Cut-Off at CP9/TA3:** Teams who have not checked out of CP9/TA3 by 1200 on Sunday September 25, 2016 will be removed from the course and transported to Race Headquarters by event staff.

**\*Important\* If your team has not reached CP9/TA3 by 1200 on Sunday September 25, 2016 you must call Race Headquarters and provide an update on your status.**

### **Section 4 – Mountain Biking**

**CP10 (unmanned)    Map 4**

CP10 is located at the junction of two trails.

**CP11 (unmanned)    Map 4**

CP11 is located on a trail east of Hwy 69.

**CP12 (unmanned)    Map 5**

CP12 is located under the north side of a bridge across the Seguin River.

**CP13 (unmanned)    Map 5**

CP13 is located on a trail north of Hwy 518.

**Alternate Short Course Options for Teams on the Full Course –** At any time after departing CP9/TA3 on the Full Course your team may opt to ride directly to the finish if it appears your team will miss the 1430 Course Cut-Off. These teams will be ranked ahead of teams who missed the Short-Course cut-off at CP9/TA3 and will further be ranked based on the highest CP they reached on the course.

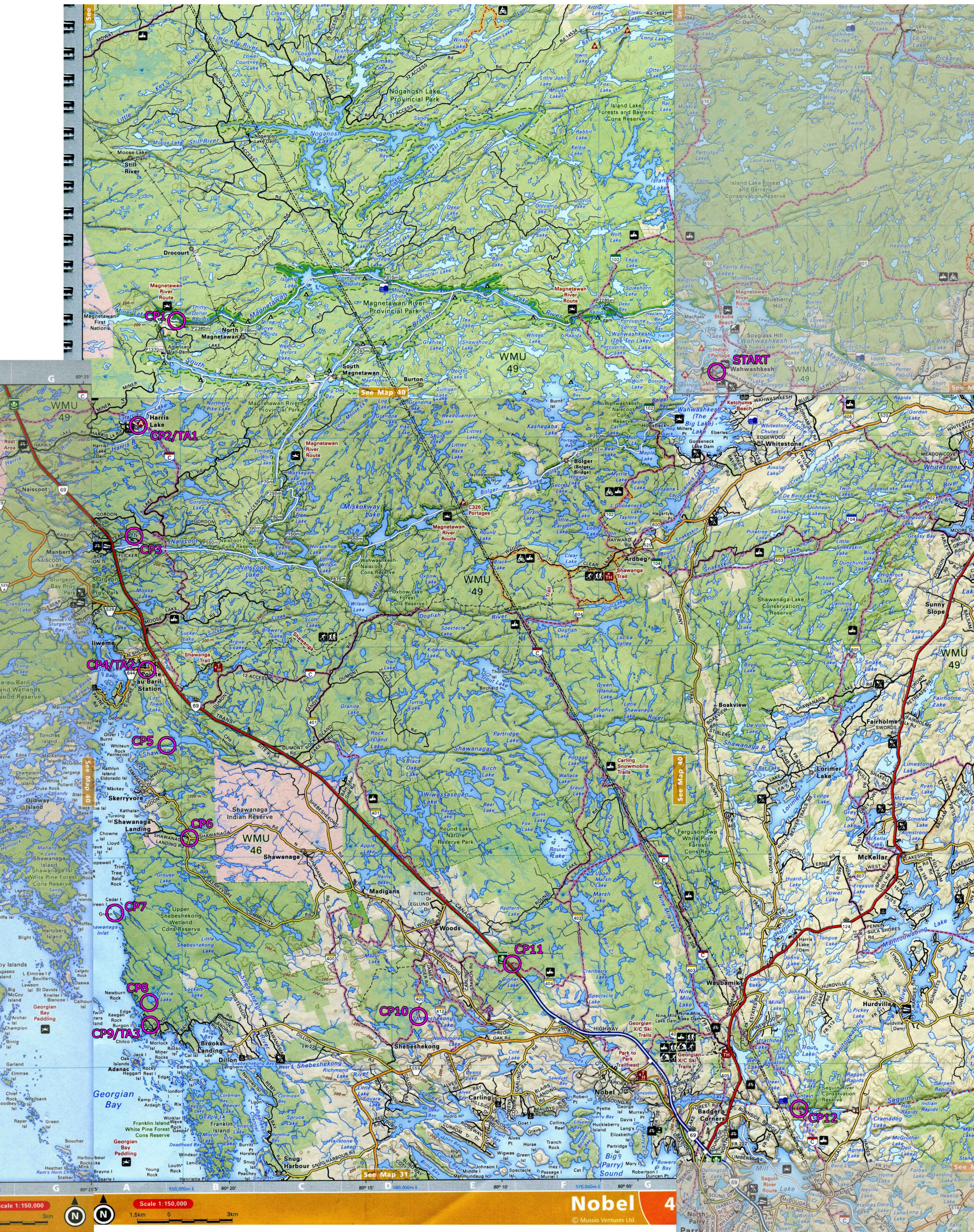
**FINISH                      Map 5**

The Finish will be at the Foley Matheson Park & Beach on the shore of Otter Lake.

**Course Cut-Off –** The course will close at 1430 on Sunday September 25, 2016. Any team who has not reached the finish line by this time will become unranked.

**Special Instructions after Finishing –** Once teams have finished they'll need to bike 1km west on Rankin Lake Road back to the "Host Site" at the Foley Community Centre and hand-in their SI Timing Card and Delorme InReach Tracking Device. Failure to hand in these items after finishing may result in improper rankings.

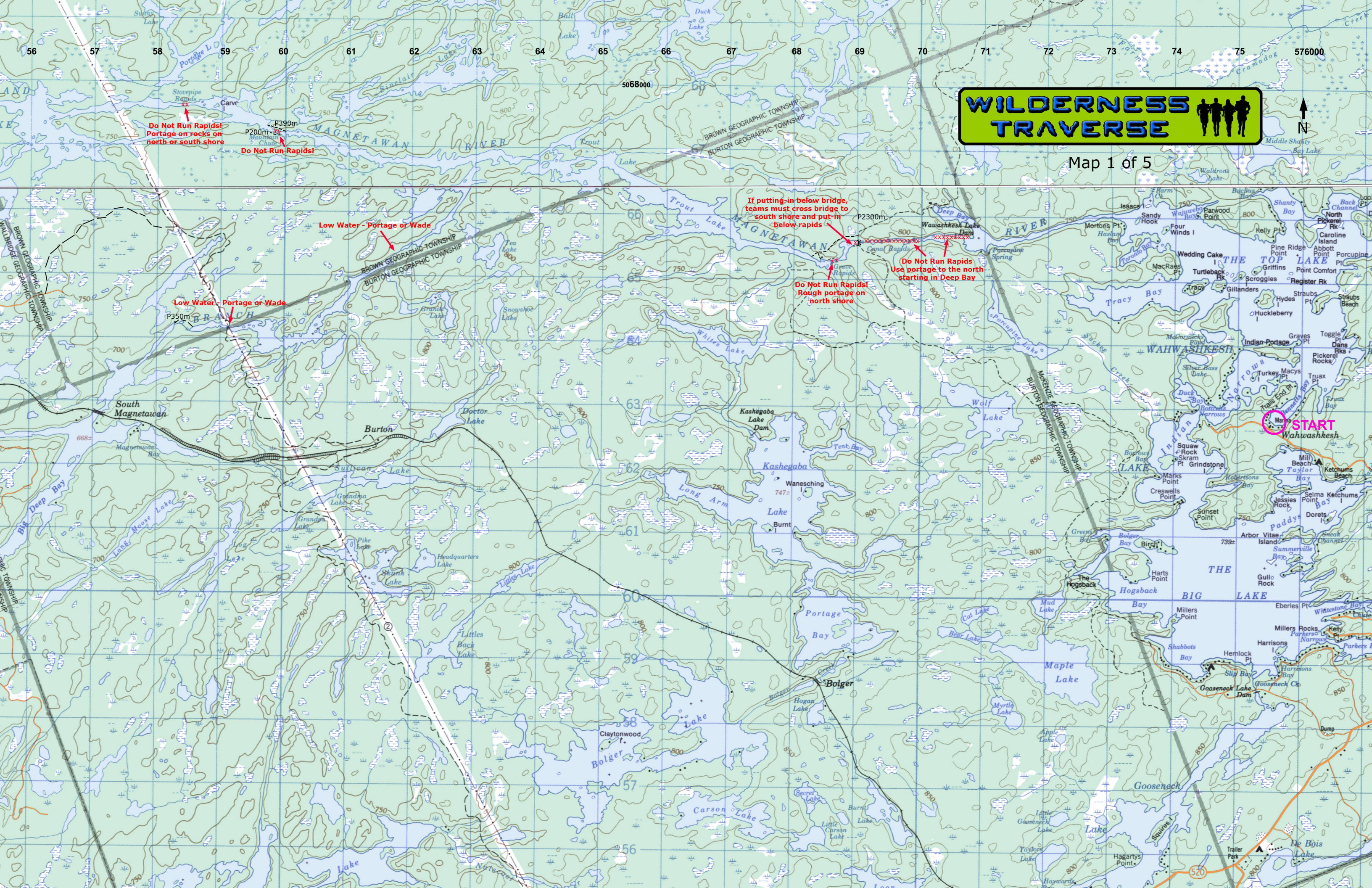




# WILDERNESS TRAVERSE

Backroad Mapbook Map  
Scale: 1:150 000  
Datum: NAD 83





# WILDERNESS TRAVERSE



Map 1 of 5

Do Not Run Rapids!  
Portage on rocks on  
north or south shore

Do Not Run Rapids!

Low Water - Portage or Wade

Low Water - Portage or Wade

If putting in below bridge,  
teams must cross bridge to  
south shore and put in  
below rapids

Do Not Run Rapids!  
Rough portage on  
north shore

Do Not Run Rapids  
Use portage to the north  
starting in Deep Bay

START  
Wahwashkesh



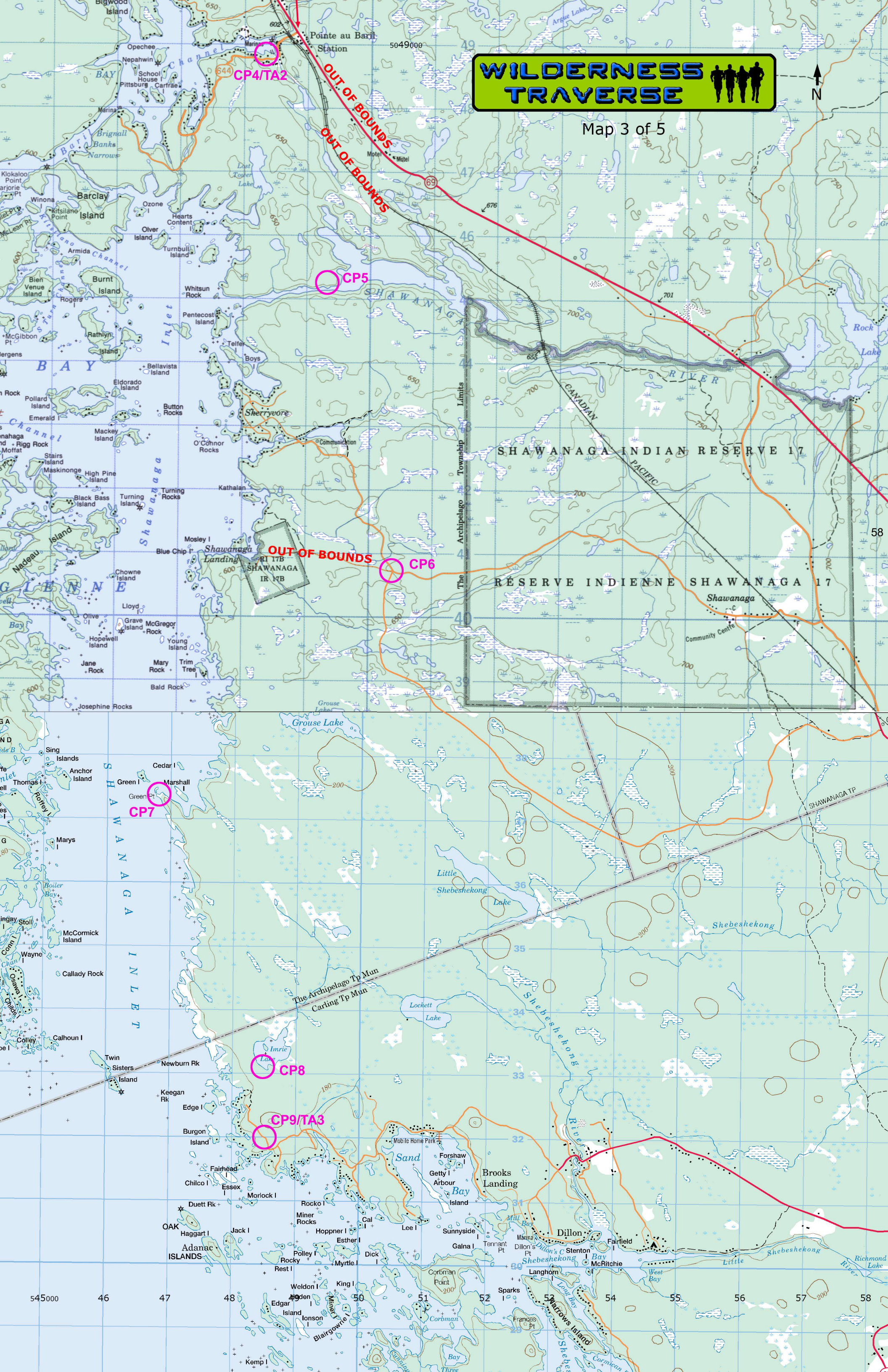




# WILDERNESS TRAVERSE



Map 3 of 5

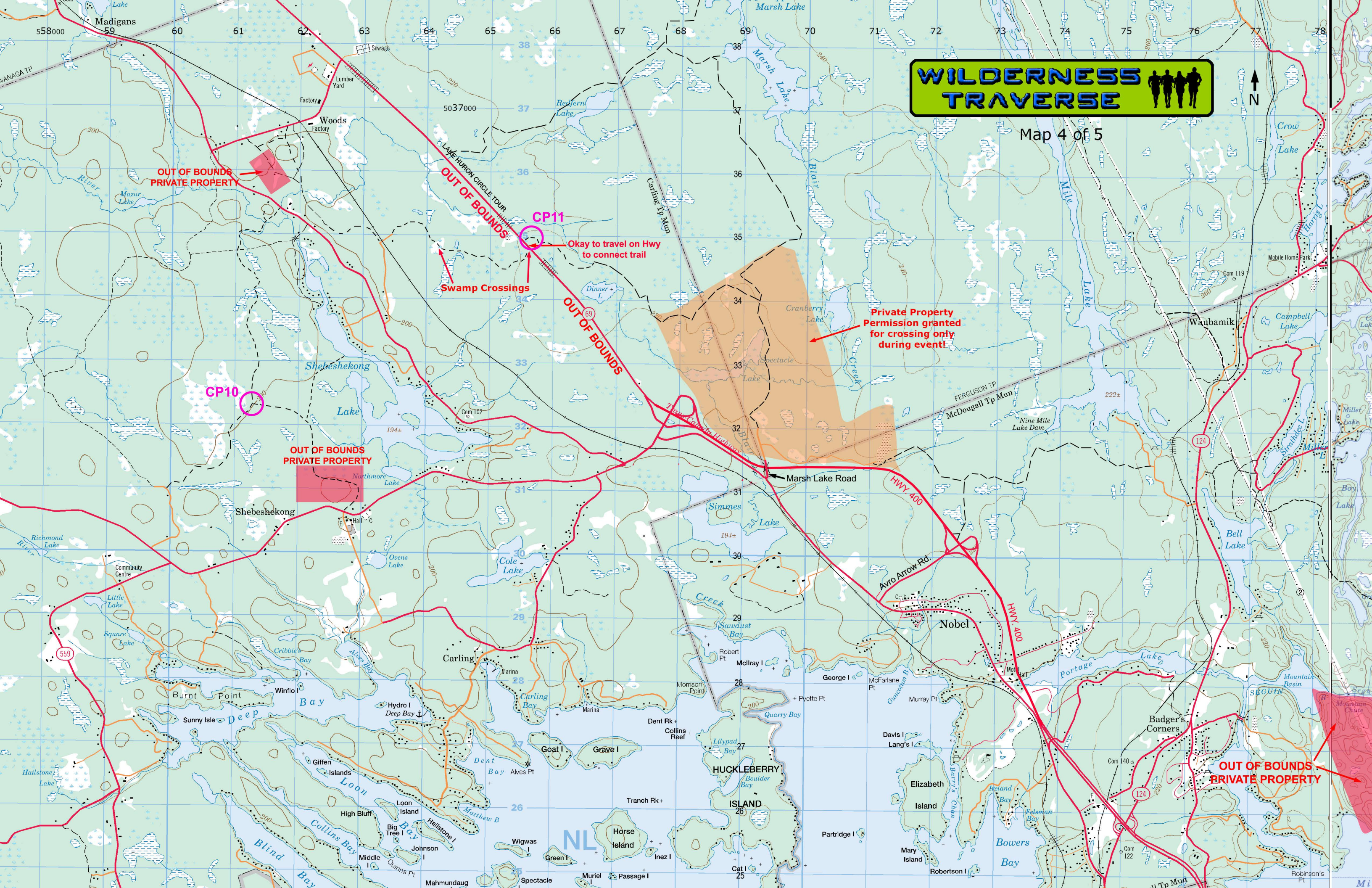




# WILDERNESS TRAVERSE



Map 4 of 5



OUT OF BOUNDS  
PRIVATE PROPERTY

OUT OF BOUNDS  
OUT OF BOUNDS

CP11

Okay to travel on Hwy  
to connect trail

Swamp Crossings

OUT OF BOUNDS

Private Property  
Permission granted  
for crossing only  
during event!

CP10

OUT OF BOUNDS  
PRIVATE PROPERTY

OUT OF BOUNDS  
PRIVATE PROPERTY



A  
N

**Private Property  
Permission granted  
for crossing only  
during event**

$U$   $N$   $D$  Must follow route through

Parry Sound  
Harbour

# FINISH

# FINISH